

**WEBINAR SERIES:**

**Next Steps in COVID-19  
Response in Long-Term Care  
and Retirement Homes**



There are more than

**78,000**

new cases of dementia diagnosed  
every year in Canada.

“We are very proud of how the nursing homes have fully embraced this approach to care and we congratulate them on their commitment and leadership. We will be working with private long-term care homes to expand the reach of the AUA approach.”

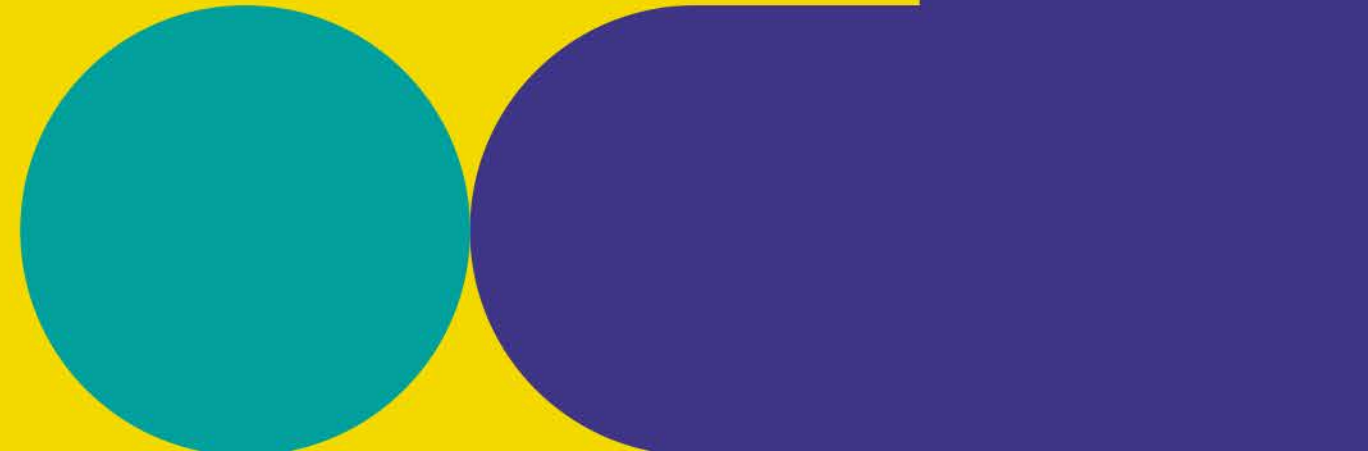
- Andrew MacDougall, Director of Long-Term Care, Health PEI

# **EXTRA:**

**Executive Training Program**

# **Call for Applications**

## **NOW OPEN**



**“Our coach was fantastic! He exemplified the excellence of the program.”**

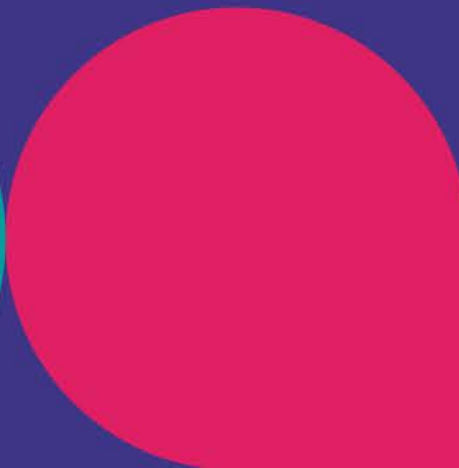
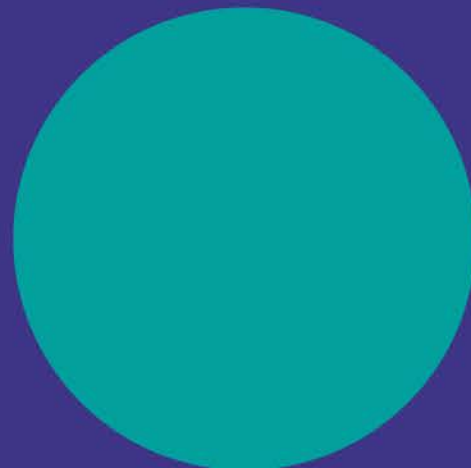
- Courtney Bean, VHA Home Healthcare  
EXTRA alumnus



**WE'RE HIRING**

**You are welcome here.**

**You will be recognized  
and valued for who you are  
as much as what you do.**

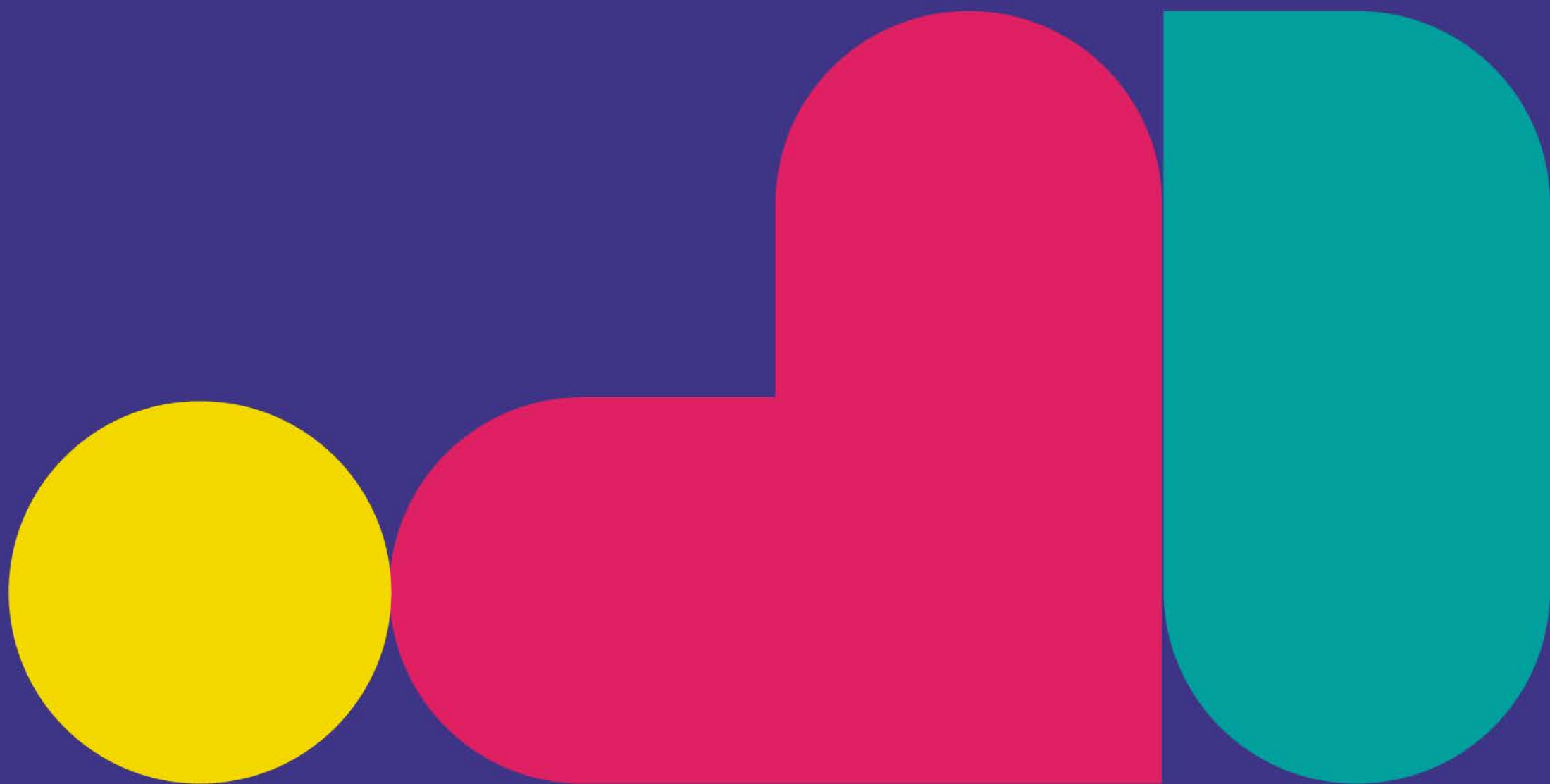




**Healthcare  
Excellence**  
Canada

**Excellence  
en santé**  
Canada

**ESSENTIAL  
TOGETHER**

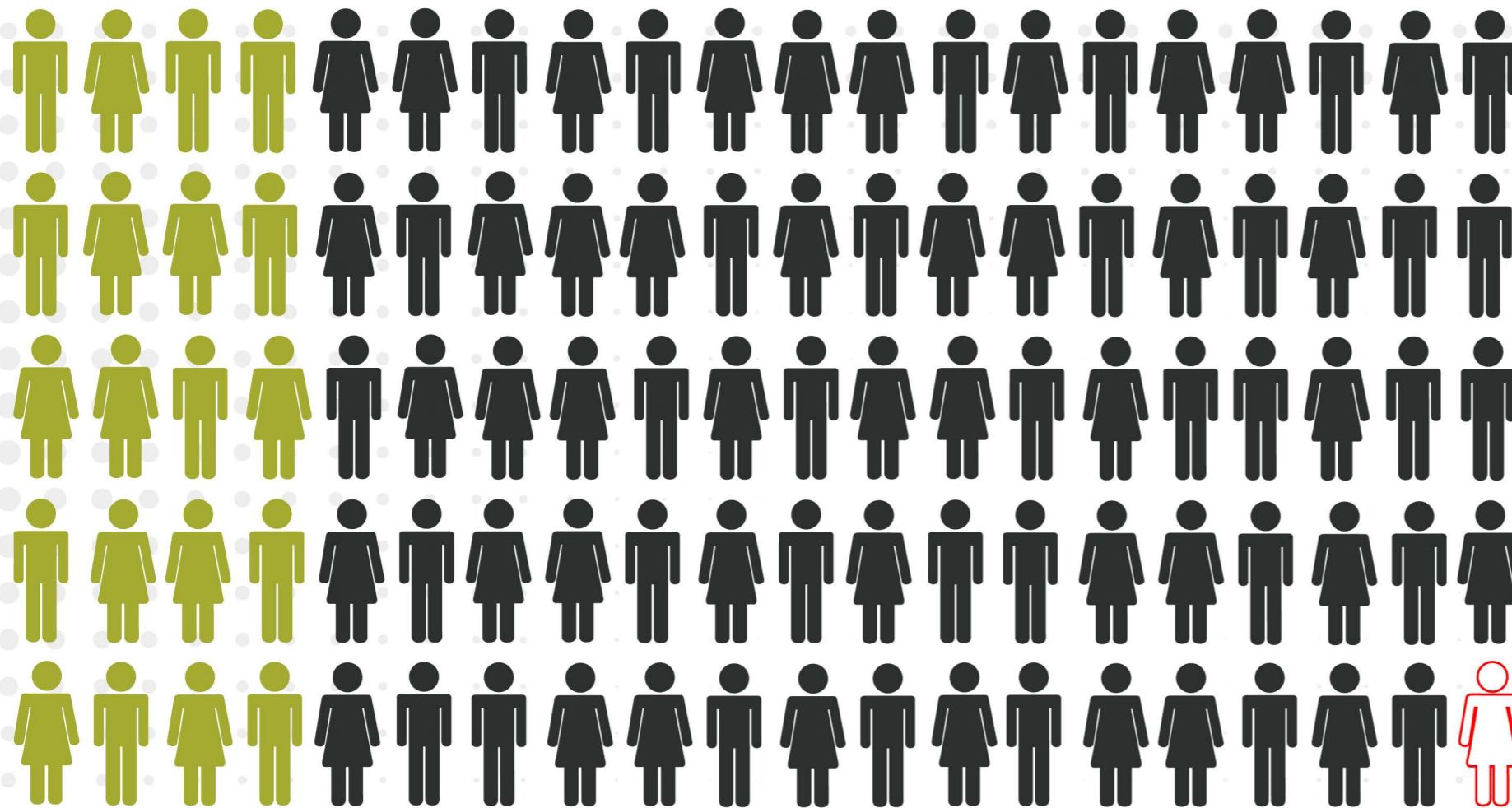







**NEWS**

# VIRTUAL LEARNING OPPORTUNITY

**Save your seat  
at the table >**



-  Likely to be helped by antipsychotics
-  Likely to have no benefit from using antipsychotics
-  Likely to have a stroke or die\*

\*There is research to show that for every 100 people with dementia who take antipsychotics one person is likely to have a stroke or die (mostly related to heart failure, sudden death, pneumonia). However, it is hard to tell if the antipsychotic medicine was the cause, because those with dementia are often at high risk even when not taking an antipsychotic.

Source: Centre for Effective Practice, February 2019 Report.

There are more than

419,000

Canadians aged 65 and older  
diagnosed with dementia.

# 52%

of residents\* in Newfoundland and Labrador  
had their antipsychotic medication successfully  
**REDUCED** or **DISCONTINUED**

\* whom participated in the AUA Collaborative

# 53%

of residents\* in Prince Edward Island  
had their antipsychotic medication successfully  
**REDUCED** or **DISCONTINUED**

\* whom participated in the AUA Collaborative

**Health PEI**  
One Island Health System

Canadian Foundation for **Healthcare Improvement**

Fondation canadienne pour **l'amélioration des services de santé**

**Q1**

**What does patient & family presence mean to you as a patient/family/caregiver or for the healthcare organization you might work for (as a healthcare researcher, admin, leader, physician, nurse etc)?**

**Q2**

**What's the most effective patient/family/caregiver presence & partnership practice you've experienced, or have in place across your organization as a healthcare leader?**